

UK12 ROAD-RAIL RIG



The world's first dedicated CPT rail truck, this rig can undertake multiple tests within the track's four-foot in a single possession.

Lankelma staff are PTS and OTP trained.


Network rail approved, the rig is self-contained on the tracks with quick access and set up. The rig's shaped profile is designed to allow access in most UK tunnels.

Generally, the test will penetrate ballast without the need for removal.

Performance Rates

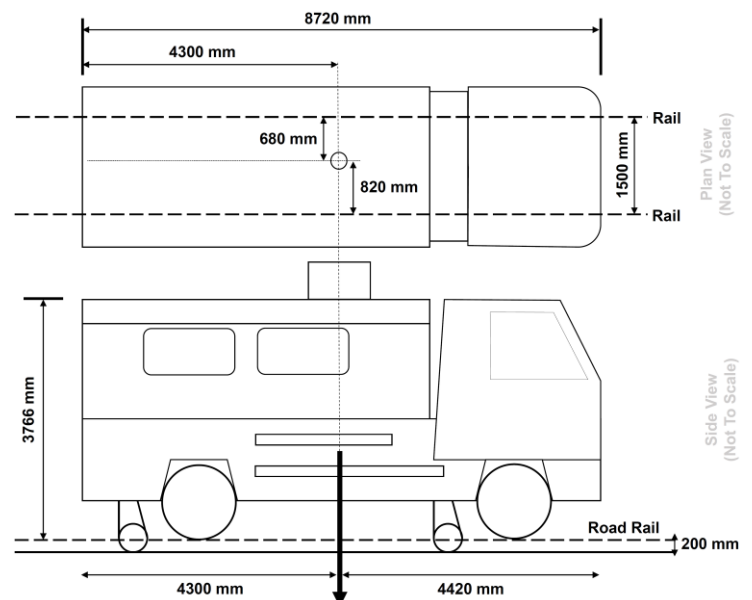
An expected 100 to 120 m of standard CPTu testing can be executed in a single possession (dependent on site conditions and access).

Applications

-  Specialist testing
-  Installations
-  Sampling
- Seismic
 - Pressuremeter
 - Magnetometer
 - Video cone
- VWP
 - Piezometer
 - Inclinator
- MOSTAP
 - Shelby

TECHNICAL DETAILS

Rig Weight	19 T
Maximum Operating Ram Capacity	15 T
Maximum Travelling Speed	86 km/h
Possession Speeds	Maximum – 32 km/h
	Points/Crossings– 8 km/h
	Reversing – 26 km/h
	Recovery – 8 km/h
Jack Plate Dimensions	1.9 m x 0.30 m 1.9 m x 0.35 m
Jack Arrangements	2 nr. transverse beams
Maximum Ground Clearance On Jacks	0.26 m
Maximum Ground Bearing Pressure	Tracking /
	Pushing – 148 kPa Pulling – 307 kPa
Maximum Track Cant	On/Off
	Tracking – 50 mm
	Travelling – 180 mm and/or 1 in 30 Gradient
Noise Output at 2 m	Testing – 81 dBA
	Deploying turntable– 89 dBA
Clamp Arrangement	36/55 Push Pull Clamp
Ram Stroke	1.20 m
Maximum Casing Size	55 mm



www.lankelma.com

Tel: +44 (0)1797 280050

Fax: +44 (0)1797 280195

Email: info@lankelma.com

Lankelma Limited, Cold Harbour Barn, Cold Harbour Lane, Iden, East Sussex. TN31 7UT